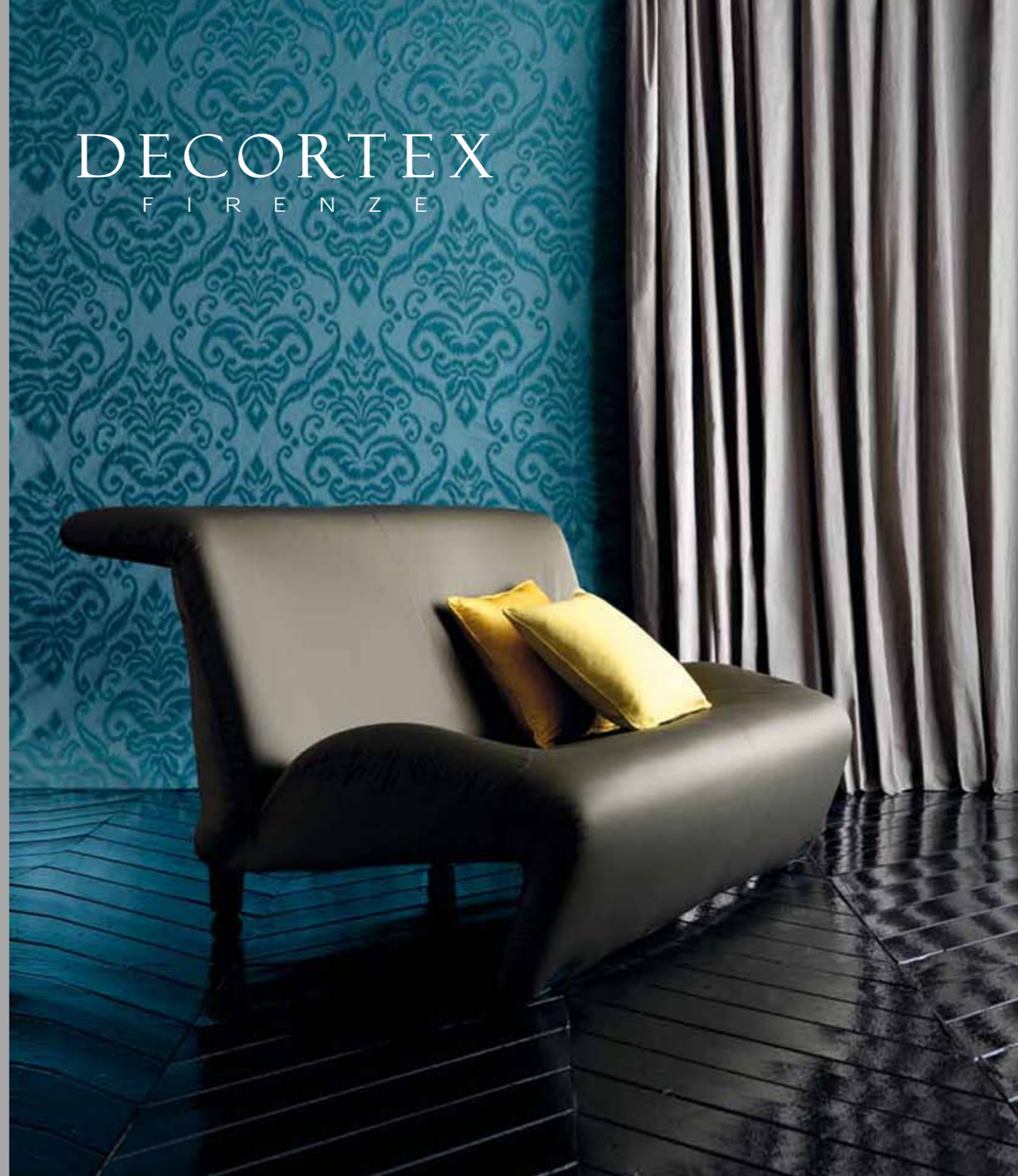


DECORTEX  
F I R E N Z E



25, via di Pagnelle  
50041 Calenzano (Firenze)  
tel +39 055.88.13.11  
fax +39 055. 88.73.096

[www.decortex.com](http://www.decortex.com)  
e-mail: [info@decortexfirenze.com](mailto:info@decortexfirenze.com)

Fall Collection 2011

Catalogue Fall Collection 2011



## 2003 "Sprint"

Colours:	50
Composition:	100% PI
Width:	150 cm - 59" Inch
Weight:	270 gr/ml
Horizontal Repeat:	/
Vertical Repeat:	/
Martindale:	25.000
Usage:	Heavy use / Uso Frequente
Product after care:	

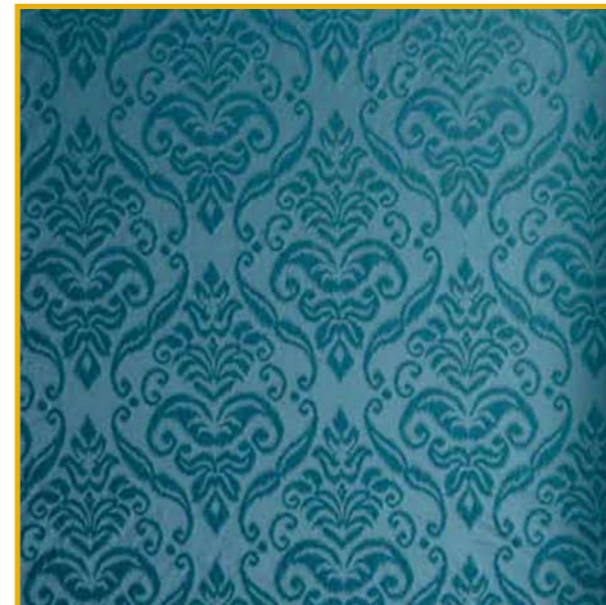
Satin obtained by using the latest generation of polyester yarns that allows to obtain a silky-looking fabric, very nice to the touch. This fibre allows to obtain exceptional performances in terms of resistance to the light, to the abrasion and washing (water 40°) and therefore suitable to any use. Article presented in 50 colors at an extremely competitive price.



## 3810 "Joy"

Colours:	66
Composition:	57%Se 43%PI
Width:	325 cm - 128" Inch
Weight:	325 gr/ml
Horizontal Repeat:	/
Vertical Repeat:	/
Martindale:	/
Usage:	Uso Decorativo / Decorative use
Product after care:	

DECORTEX completes its wide range of double-width taffetas (Luz 100% Silk, Desiderio 100% TCS, Platinum 100% Polyester) with a new silk (53%) Taffetas and polyester (47%) in cm. 320 width in 66 very new trendy colors. The result is a product easy to use with an excellent resistance to the light (6) and with an exceptional Quality /price ratio.



## 3811 "Oriente"

Colours:	22
Composition:	47% Li 29% Co 24% PI
Width:	325 cm - 128" Inch
Weight:	510 gr/ml
Horizontal Repeat:	59,5 cm - 23 5/8 Inch
Vertical Repeat:	70,0 cm - 27 4/8
Martindale:	16.000
Usage:	Uso medio / Normal Use
Product after care:	

Damask realized by using effects (such as IKAT) and colors that recall the far Est. It is a new jacquard quality in cm. 320 width, polyester warp, linen and cotton weft, extremely versatile, suitable both for decoration (double-width) and upholstery (even removable), having a good resistance (16.000 Martindale rubs) and being washable in cold water. The motif is being woven parallel to the selvage, such as a cm 140 width fabric. It has therefore the considerable merit to be for curtain use in locations whose height is much higher than the one of the fabric itself. Presented in 22 colours which go from the pastel to more intensive blues and reds, it can be used both sides.



## 3922 "Fedra"

Colours:	33
Composition:	100% Li
Width:	295 cm - 116" Inch
Weight:	571 gr/ml
Horizontal Repeat:	/
Vertical Repeat:	/
Martindale:	/
Usage:	Uso Decorativo / Decorative Use
Product after care:	

This article continues the tradition of the DECORTEX double-width linens. This new quality 100% Linen with a "soft hand" finishing presented in 33 innovative colors offers the opportunity to decorate any room with elegance, delicacy and sobriety. Being a pre-washed item, no additional washing is needed before use.